

Safety in Traffic

REFLECTIVE STRIPS FOR EDGE
AND DISTINCTIVE MARKING VEHICLES
AND THEIR TRAILERS

CONTOUR MARKING



Traffic safety is a concern of every individual and society as a whole.

One of the essential elements of security is good indication, and thus the visibility of vehicles in traffic.

In order to better visibility of long, heavy vehicles and their trailers, etc., issued a statement of edge marking of such vehicle reflective strips (contour marking).

GRAFEX-trade

Produced by GRAFEX-trade d.o.o. Zagreb in cooperation with 3M

3M

REFLECTIVE STRIPS FOR EDGE AND DISTINCTIVE MARKING VEHICLES AND THEIR TRAILERS (CONTOUR MARKING)



Traffic safety is a concern of every individual and society as a whole.

One of the essential elements of safety is a good mark, and thus the visibility of vehicles in traffic.

In order to better visibility of long, heavy vehicles and their trailers, etc., issued a statement of edge marking of such vehicle with reflective strips (contour marking).

Which vehicles should be marked with reflective strips for edge marking?

- The long vehicles and their trailers
- Heavy vehicles and their trailers

What is homologation?

Homologation is the process of quality control in accordance with strict European standards, where it monitors the entire production process and quality control of all parts of production, from defining the ordering of raw materials to final inspection the final product.

International Convention!

Our country is a signer of the International Convention on traffic safety, and also committed to accepting of international standards. Based on these commitments the Republic of Croatia has issued an Order of the retroreflective homologation mark for heavy and long vehicles and their trailers (NN 99/00).

Testing based on these retroreflective marking command may be performed only by an authorized laboratory under the requirements of Regulation No. 104 of the United Nations Economic Commission for Europe, with amendments, which came into force at the beginning of the 15th January 1998. (ECE documents).

This Regulation is in addition to the Geneva Agreement in 1958. on the acceptance of equal technical regulations for wheeled vehicles, equipment and parts that can be installed and / or used on wheeled vehicles and requirements for reciprocal recognition of homologation assigned under these regulations (hereinafter referred to ECE Regulation R 104.00)

IT MEANS THAT ALL VEHICLES FROM 01 APRIL 2001. MUST BE REGULATED REFLECTIVE EDGE MARKING STRIPS FOR VEHICLES HOMOLOGATED IN ACCORDANCE WITH THE REGULATION ECE R 104.00

The prescribed markings are made in cooperation with 3M by:

- high-quality retroreflective material on which our company

which is the only homologated manufacturer in the Republic of Croatia and the second in Europe, provides identifying document which is attached to traffic license

- active area is made of reflective special structure of the prescribed color
- for each type of vehicle we produce a design of retroreflective products according to international standards

Each reflective mark has:

- manufacturer's declaration
- mark and number of homologation
- identification document
- the original conformity and quality guarantee certified by the company GRAFEX-trade and 3M
- 3 years warranty period for the product on tarpaulin, 5 years for the product on flat surfaces
- service maintenance and renewal provided by the manufacturer
- maintenance instructions

Why is this so?

On the basis of the European statistics on traffic accidents, it was observed that the long and heavy vehicles and their trailers, buses and other motor vehicles are very dangerous traffic participants.

Therefore, the international community is working hard to increase safety, and to have standard forms to increase visibility of vehicles in traffic, has developed new systems of protection contour marking, all in order to increase traffic safety.

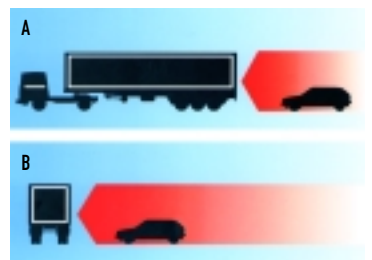


An example of how you see a vehicle by day, and a vehicle at night without and with contour markers.

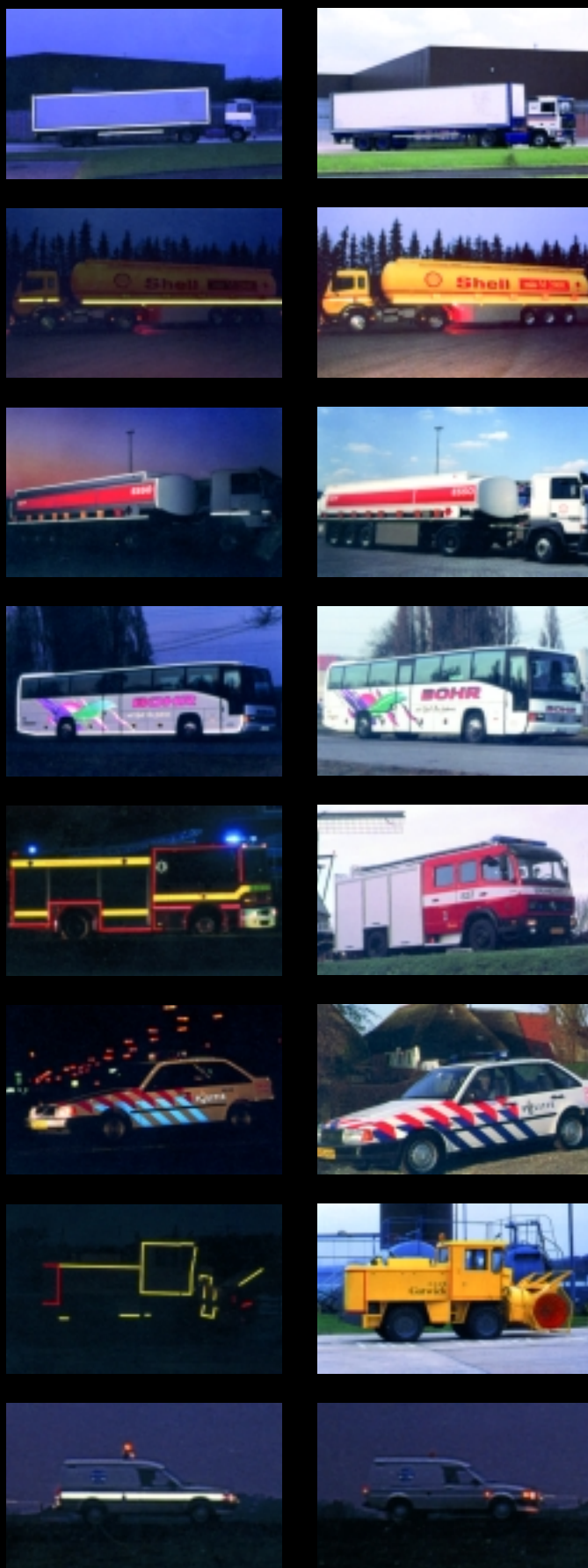
The German federal ministry of transportation, after a lengthy study claimed that the contour markers on vehicles reduces the number of collisions.

A - from the rear 41%

B - from the side 37%



Examples showing the use of contour markers on trucks and their trailers, tank trucks, buses, fire and police vehicles, and various working vehicles.



DIMENSION PLATES FOR SLOW VEHICLES

In order to better visibility of slow vehicles and their trailers, issued a statement on the labeling of slow vehicles and their trailers.

Which vehicles should be marked with the plate for slow vehicles?

- all vehicles, for which speed by construction not exceeding 30 km/h (tractors and trailers, combine harvesters, utility vehicles, etc.)

The Republic of Croatia has issued an order on approval of rear marking plates for slow vehicles (NN 17/99).

Testing of marking plates for slow vehicles on the basis of these commands can be performed only by an authorized laboratory under the requirements of Regulation No. 69 of the United Nations Economic Commission for Europe, with the amendments which entered into force on the ending of 27th September 1998. (ECE documents).

This Regulation is in addition to the Geneva Agreement in 1958., on the adoption of uniform conditions of approval and the mutual recognition of homologation of equipment and parts of motor vehicles (hereinafter: Regulation ECE R 69.00)



THIS MEANS THAT ANY SLOW VEHICLES AND THEIR TRAILERS MUST HAVE PRESCRIBED BOARDS HOMOLOGATED IN ACCORDANCE WITH THE REGULATION ECE R 69.00.

How to identify a valid plate?

By looking at the board it is necessary to observe the correct foil and homologated code by Regulation ECE R 69.00. The correct code is: E26 69 R 00001



Other items from the group of mark for vehicles

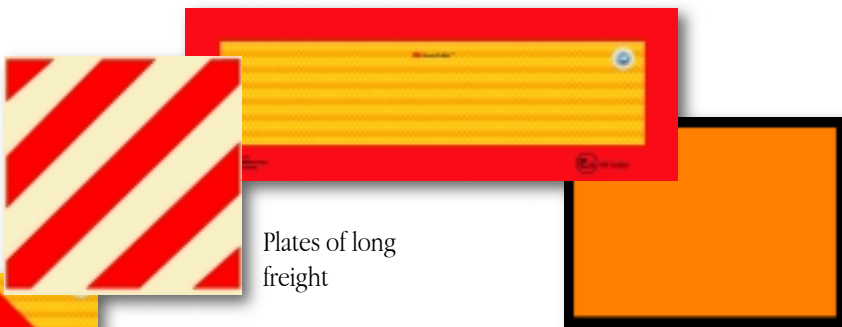
Our production program includes many items from the auto program, such as plates for long and heavy vehicles, long cargo, dangerous goods, signs and speed limits of different labels, notices (such as the required direction, prohibition, thank you not to smoke, look at distance, fasten your seat belts) to various of decorative and ornamental items, fragrances to refresh the area, the silk flag, etc. this page shows only a part of items from this product group. If you are interested, there is a complete offer on our web site www.grafex-trade.hr, and we can also deliver our product catalog.



NEW!

Marks for military vehicles and their trailers according to the NATO standards

Dimension plates for long vehicles



Dimension plates for heavy vehicles



Plates of long freight

Plates indicating dangerous loads



Sticker "HR" state mark for vehicles according to international standards.

The label has a certificate number U-11378/00



Speed limit labels

- 50 km
- 60 km
- 70 km
- 80 km
- 90 km
- 100 km
- 120 km



Sticker direction, prohibition, thank you not to smoke, look at the distance, just a part of vehicles stickers.

It is important to emphasize that all products from our production line are properly declared and identified according to the Standardization Law (National Gazette 96/03 of July 10, 2003, Art. 17. and 18.)

All our products are marked with the EAN code owned by the GRAFEX-trade to which the EAN code was assigned from the EAN International/UCC. What does this mean? Each of our product has the name of the item, the name and address of manufacturer, method of use, method of use, number of attest or homologation and EAN code.

Homologated products have an additional quality guarantee of the 3M company.

GRAFEX-trade